

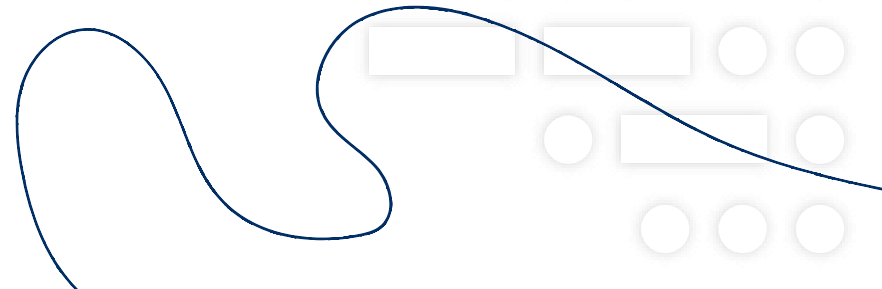


# The InforMining project

2018-2021

University of Antwerp

Institute of Development Policy (IOB)



**Sara Geenen**

Promotor



**Boris Verbrugge**

Co-Promotor



**Eugenia Robles**

PhD. Candidate



# InForMining

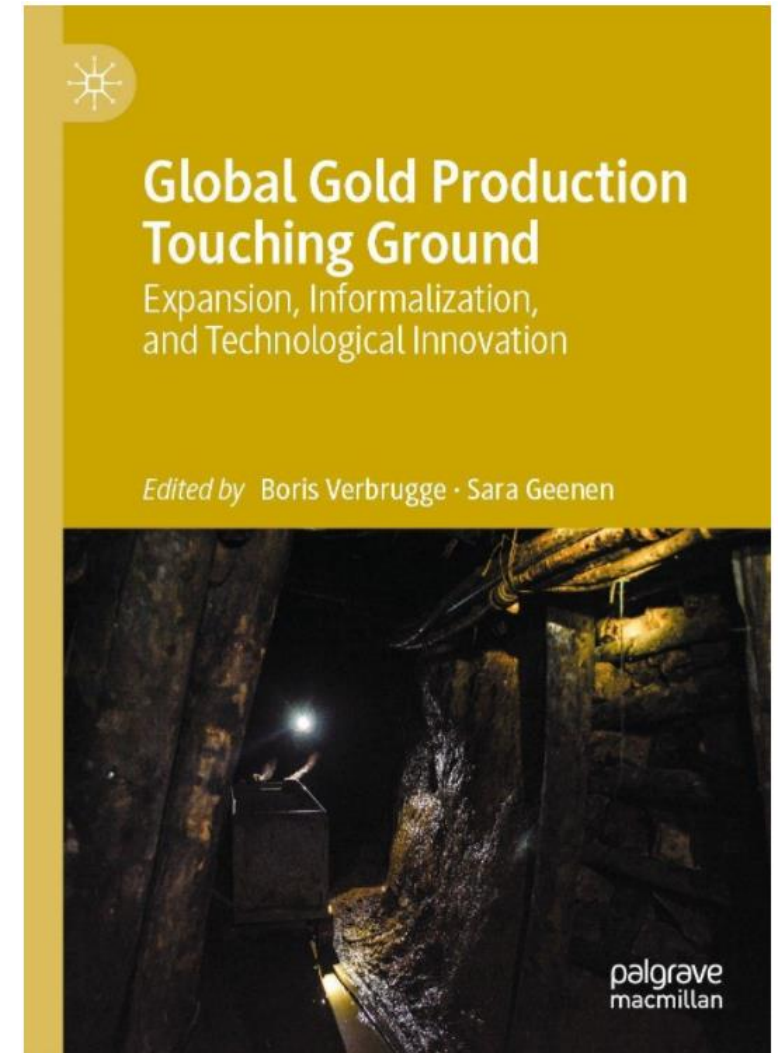
Conventional understanding: informal gold mining  
'at the margins'

**InForMining:** informal mining takes center stage

- How is informal gold mining functionally integrated into the global gold production system?
- What does this imply for different categories of workers?

'Global gold production touching ground'

- Informal mining responds to 'triple squeeze' in industrial mining
- Informal mining embedded in context-specific socio-institutional structures



# Survey

## 01 The Philippines

Rosario (Agusan del Sur), T'boli (South Cotabato), Diwalwal (Davao de Oro)

## 02 Peru

La Rinconada (Puno)

## 03 Democratic Republic of Congo

Durba (Haut Uélé), Shabunda (Sud Kivu)



# Methodology



## Qualitative data

Ethnographic methods: participant observation, interviews, document collection





## Quantitative data

121 questions

Philippines

600

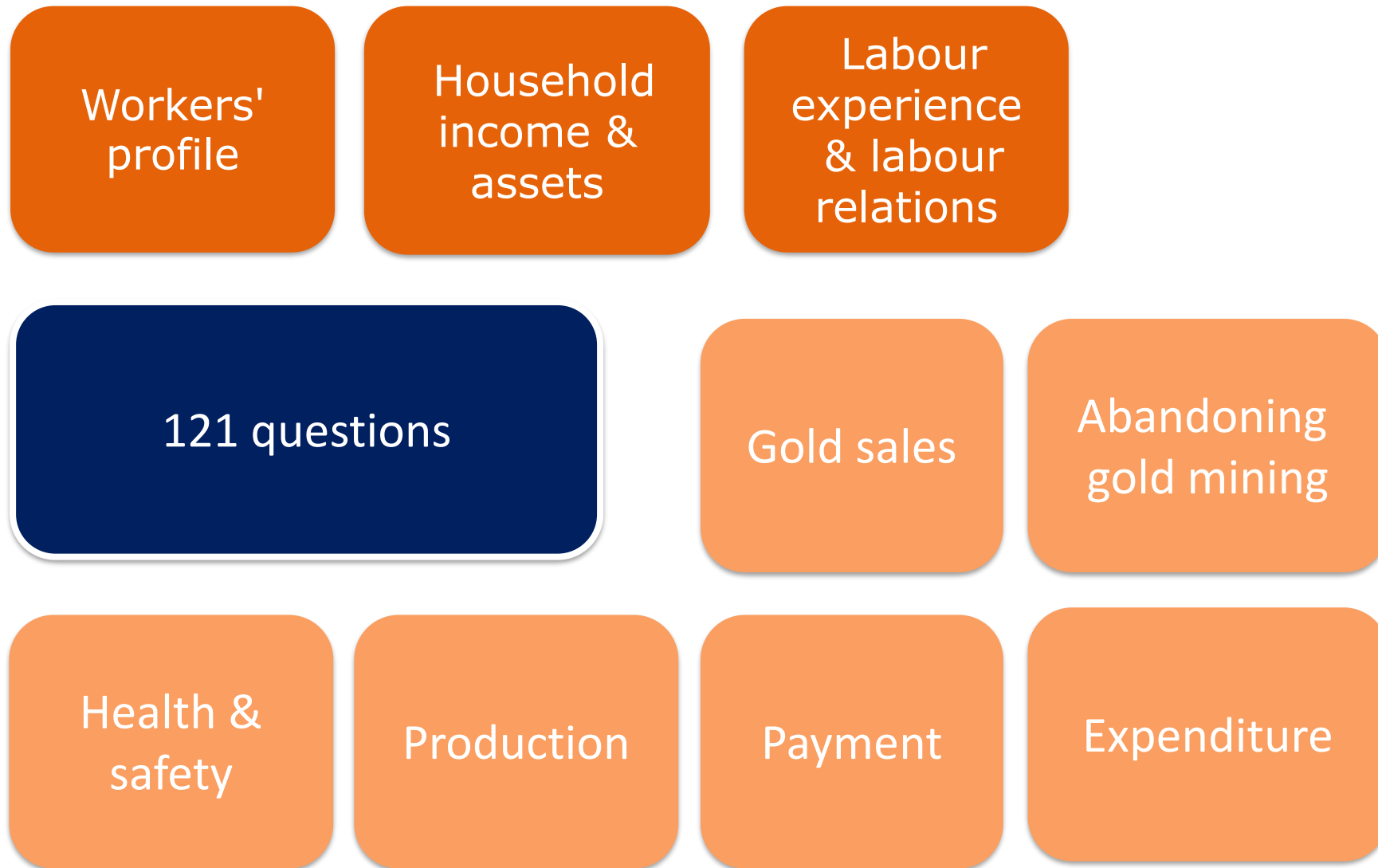
Peru

150

DRC

614







# Limitations and challenges

La Rinconada



Shabunda



Diwalwal



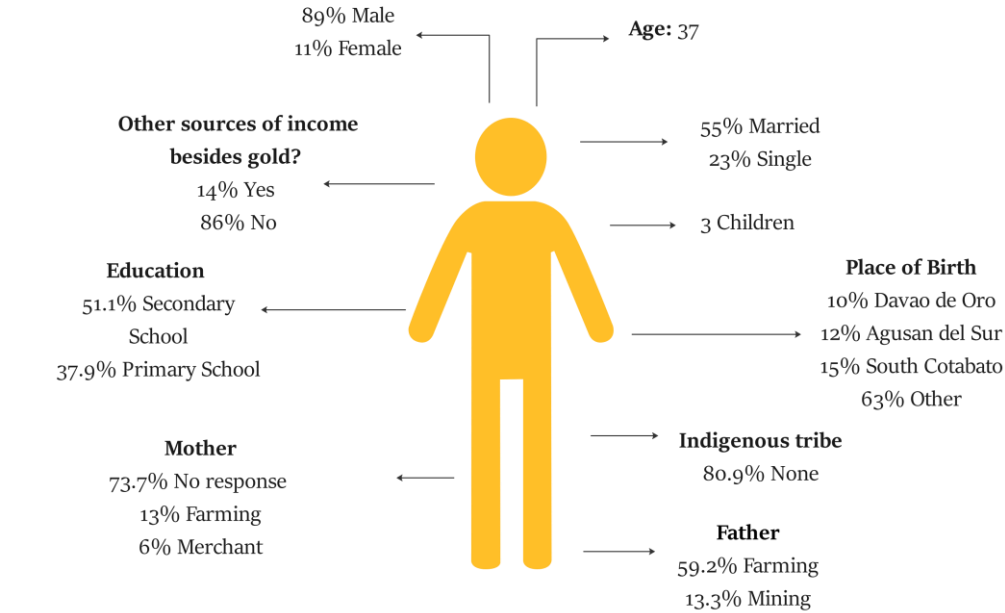
# Workers' profile





The Philippines

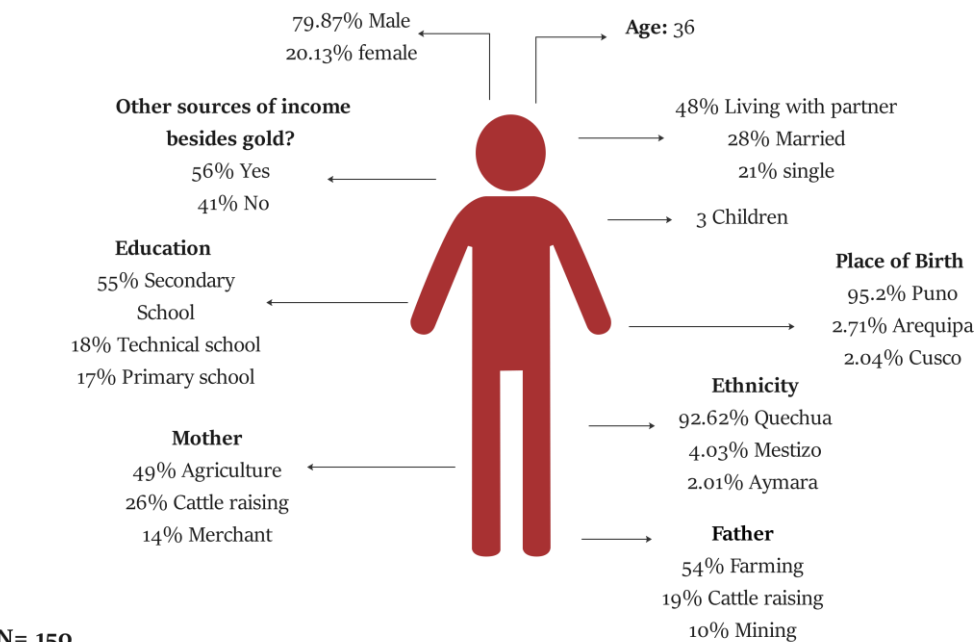
Worker's profile



N= 600

Peru

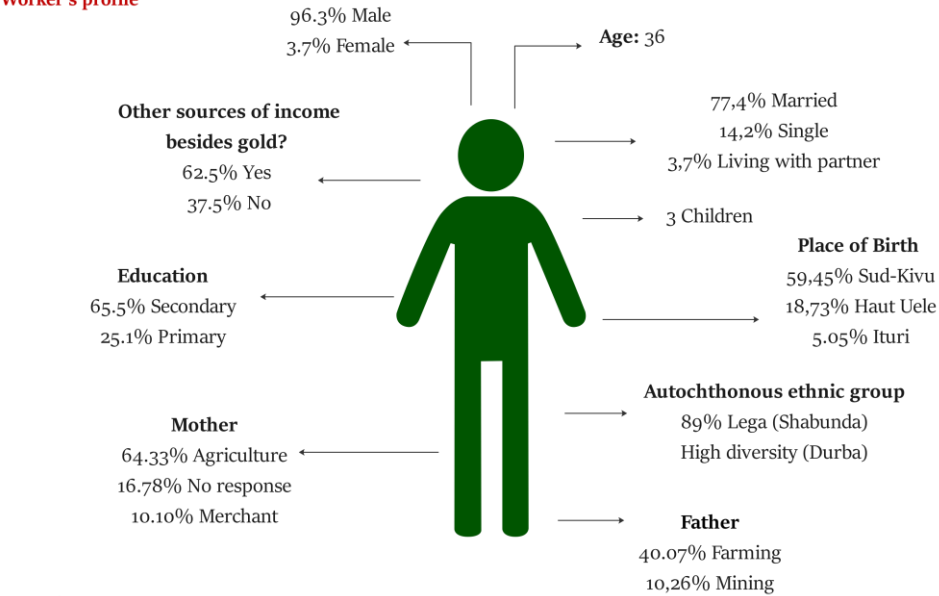
Worker's profile



N= 150

DRC

Worker's profile



N= 614



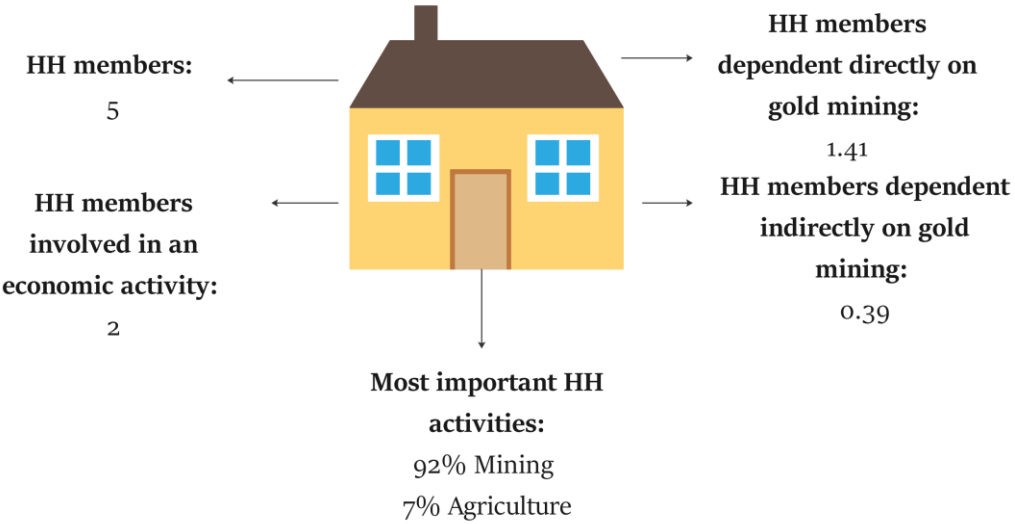


Household economy



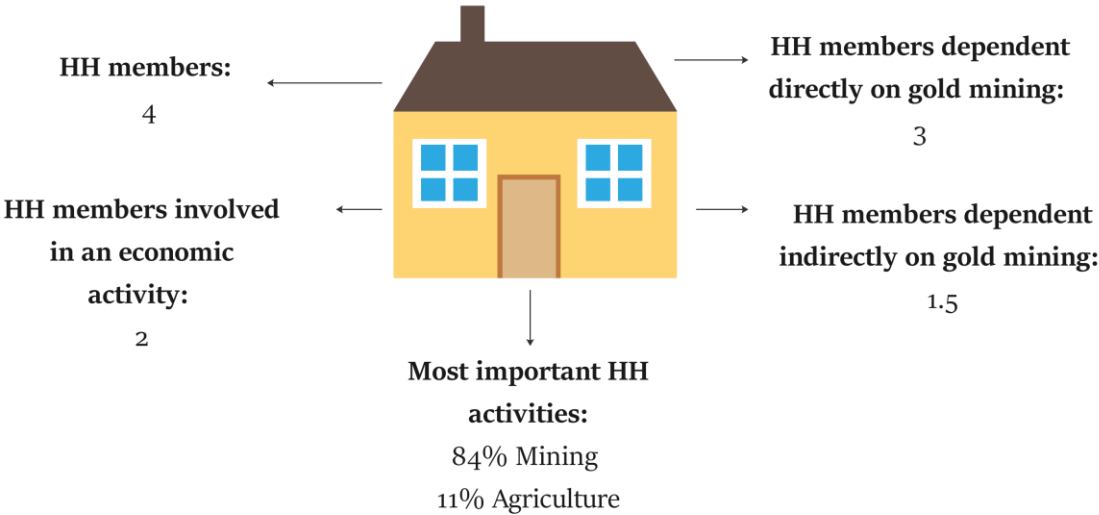
The Philippines

Household economy



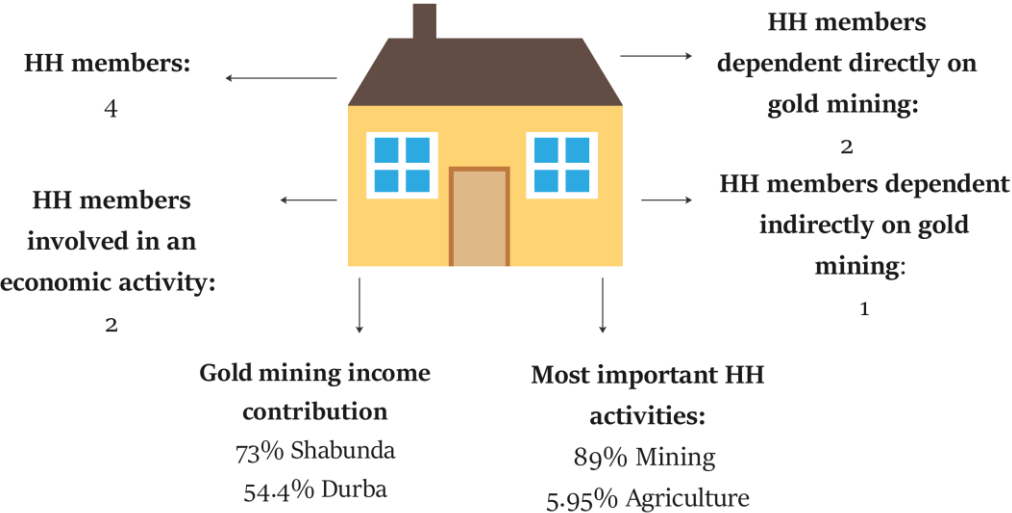
Peru

Household economy



DRC

Household economy

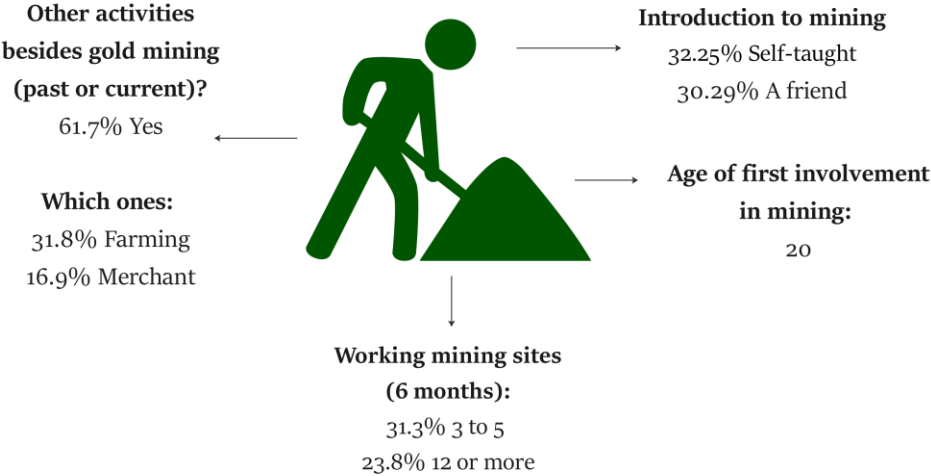
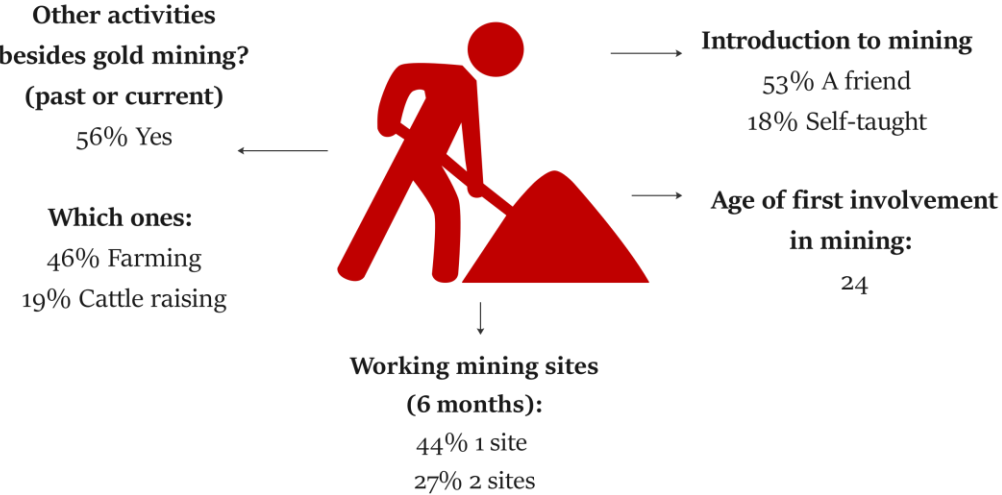
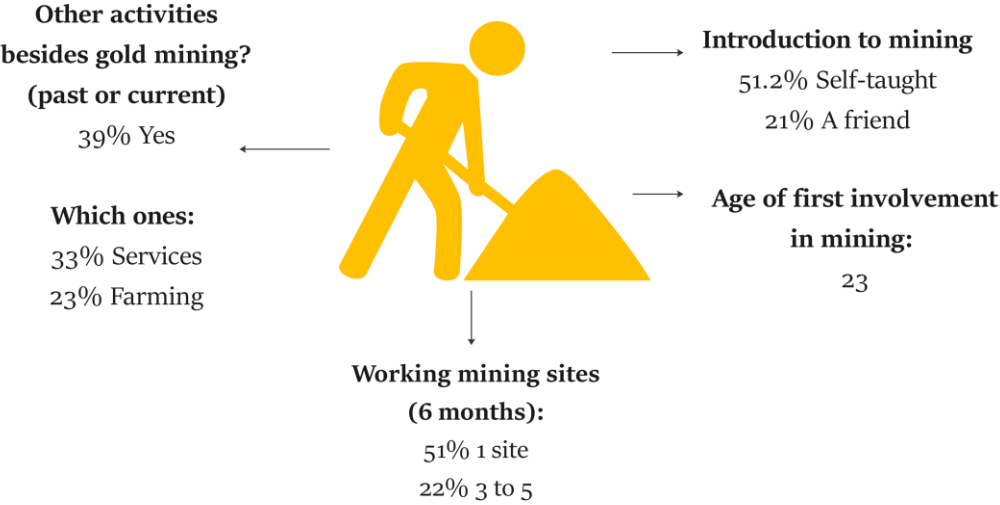






Labour







## Are you a member of a small scale mining cooperative or association?

### Philippines

| Value       | Frequency | %      |
|-------------|-----------|--------|
| Yes         | 5         | 0.8%   |
| no response | 596       | 99.2%  |
| Total       | 601       | 100.0% |

### Peru

| Value       | Frequency | %   |
|-------------|-----------|-----|
| No          | 114       | 77% |
| Yes         | 34        | 23% |
| No response | 1         | 1%  |

### DRC

| Value       | Frequency | %     |
|-------------|-----------|-------|
| No          | 318       | 51.8% |
| Yes         | 110       | 17.9% |
| No response | 186       | 30.3% |

# Diversity in the workforce. An example from the Philippines

## Labor hierarchy Informal mining

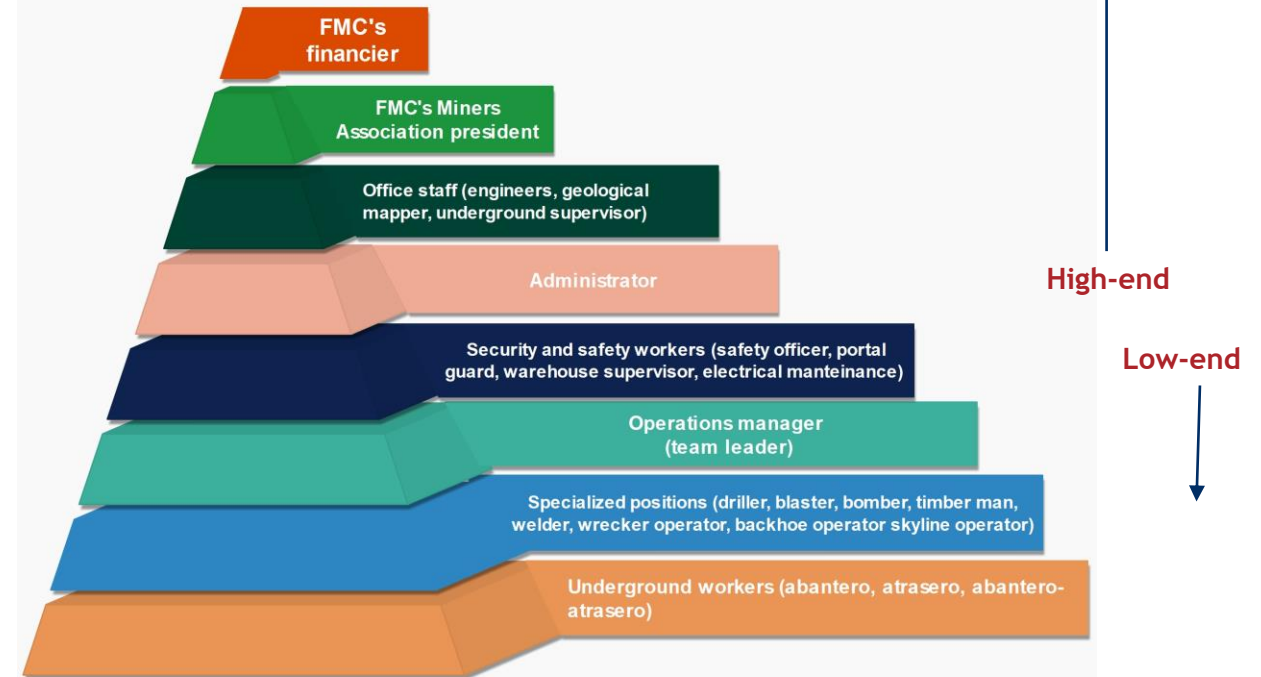
Purok Loring, Rosario, Agusan del Sur.



Source: Own ellaboration

## Labor hierarchy Formal Mining

FMC, Rosario, Agusan del Sur.



Source: Own ellaboration





Highlights



- **ASM important contribution to household income**
- **Long experience in mining, but also diversified experience in other activities (more so in DRC and Peru)**
- **'Self-made' ASM workers, but transfer of (technological) knowledge within the mining teams**
- **High mobility (for some in-region, for some across regions) (more so in DRC)**
- **Diversity in the workforce**
- **Very few workers adhere to or even know about cooperatives (even though compulsory adherence) (more so in Peru and Philippines)**

# Fruit for thought





## Analysis

- Does formalization make a difference? (data from Philippines)
- Correlate workers' positions with labour conditions, income & sharing arrangements
- Descriptive analysis of working conditions, health and safety

## Policies

- Formalization policies
  - Implementation challenges (cf. cooperatives) & incentives
  - Shortcomings: what about the protection of labour?
- Labour policies (social upgrading) that take into account diversity in the workforce
- Occupational health & safety ([World Bank's current focus in ASM](#))